



**GEKIPS**

Documentation technique



# Keyless 360

Serrure mécanique





# KEYLESS 360 - INSTRUCTIONS

## VERROUILLAGE





1. Fermer la porte.
2. S'assurer que le verrou pointe sur , puis choisir un chiffre et une lettre.
3. Tourner le verrou sur .
4. Brouiller les couronnes.

## DÉVERROUILLAGE

1. Entrer le code lettre & chiffre.
2. Tourner le verrou sur .
3. Ouvrir la porte.
4. Tout en laissant le verrou sur , brouiller les couronnes pour l'utilisateur suivant.

## CLÉ MANAGER POUR OUTREPASSER LE CODE





(accès immédiat du gestionnaire sans obstruction par code)

1. Insérez la clé principale pointant vers le .
2. Pivotez le verrou vers  et accédez au casier, puis refermez la porte en laissant le verrou sur .
3. Remettez le verrou en place sur  et otez la clé.

*\* Le casier restera verrouillé et le code restera le même.*

## USER CODE RETRIEVAL & RESET

(retrieve forgotten user code and reset code for new user)

1. Insert the Master Key pointing towards the  and turn the knob to .
2. With each dial: spin until it stops.
  - After setting each dial, the last used code will display.
3. Turn the knob back to  and remove the key.
  - Then, return the knob to  and scramble the dials for the next user.

# KEYLESS360 ARCHITECTURAL SPECIFICATIONS



MODEL:  
**KEYLESS360-SN**  
 SATIN NICKEL

The Keyless360 can be custom finished to any brand style with a wide array of customizable finish options.  
 (All specs and features apply)

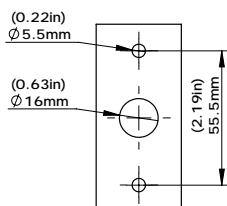
## SPECIFICATIONS

- Shared (temporary) or assigned (permanent) use
- 2-digit alphanumeric combination
- Compatible with wood, glass, plastic, phenolic & metal locker doors
- Zero operating expenses - no batteries or wires
- LEED V4 - adds 2 LEED credits
- 5-year comprehensive warranty
- One Master Key has 3 functions: bypasses the code, resets the lock, and retrieves the code - all conveniently from the front
- Lock features reprogrammable-cylinder. When Master Key is lost or stolen, new Master Key is issued. Simply insert new Master Key and cylinder is reprogrammed - patented solution
- Anti-pick and tamper resistant
- Self-correcting, Breakaway Knob protects against forced entry - patented solution
- IP69K - Complete dust and water resistance
- Strong 100% metal for long-term and heavy-use - no plastic components.
- The same lock model with ADA lever available

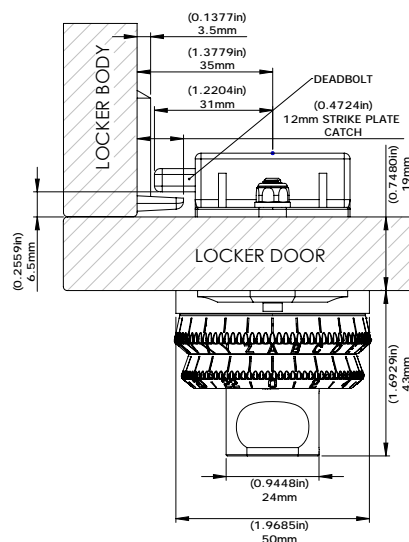
## ADDITIONAL FEATURES

- Sleek and modern design
- Standard, premium & custom finishes
- Large, clear combination digits, double the size of any competitors (5mm tall), that don't fade
- Sufficient digit and dial spacing that prevents accidental lockouts
- Strongest latch (bolt) in the industry and cannot be forced unlocked
- Dead bolt or spring bolt latch type (standard offset: 31mm - addtl available)
- Simple 2 screw installation
- Surface mounted
- Accommodates doors 1-21mm thickness
- Standard vertical 3-hole routing
- Easy 2-screw plug and play
- Easily retrofits from most locks on most locker doors. "The Ultimate Retrofit Lock"
- Ergonomic non-slip grip
- One step twist-&-pull operation
- Knob rotates 90 degrees (from 12 o'clock to 3 o'clock) on left and right hand locks
- Latch is simply interchangeable to left or right
- Clear locked and unlocked status indicator is visible from a distance

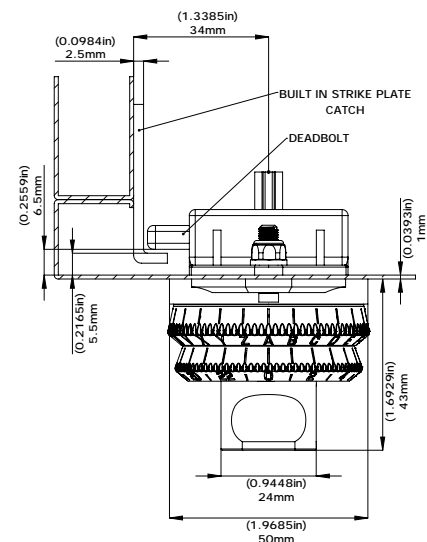
### LOCK ROUTING



### TOP VIEW 6-21mm THICK DOOR



### TOP VIEW 1-6mm THICK DOOR



**ADA OPTION AVAILABLE**

# KEYLESS360-ADA ARCHITECTURAL SPECIFICATIONS



MODEL:  
**KEYLESS360-SN-ADA**  
SATIN NICKEL

The Keyless360 can be custom finished to any brand style with a wide array of customizable finish options. (All specs and features apply)

## SPECIFICATIONS

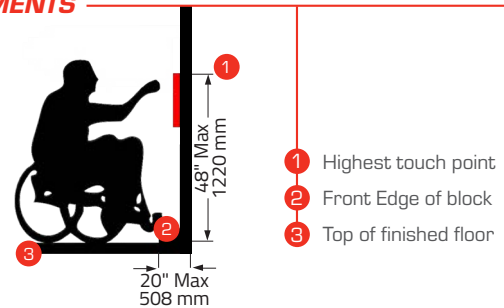
- Meets the 2010 and 2012 Standards for Accessible Design
- The same lock model with ADA lever available
- Integrated lever serving as a pull
- Shared (temporary) or assigned (permanent) use
- 2-digit alphanumeric combination
- Compatible with wood, glass, plastic, phenolic & metal locker doors
- Zero operating expenses - no batteries or wires
- LEED V4 - adds 2 LEED credits
- 5-year comprehensive warranty
- One Master Key has 3 functions: bypasses the code, resets the lock, and retrieves the code - all conveniently from the front
- Lock features reprogrammable-cylinder. When Master Key is lost or stolen, new Master Key is issued. Simply insert new Master Key and cylinder is reprogrammed - patented solution
- Anti-pick and tamper resistant
- Self-correcting, Breakaway Knob protects against forced entry - patented solution
- IP69K - Complete dust and water resistance
- Strong 100% metal for long-term and heavy-use - no plastic components.
- The same lock model with ADA lever available

## ADDITIONAL FEATURES

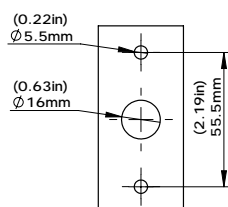
All additional features of the Keyless1-ADA are exactly the same as the Keyless1 non-ADA.

## 2010 & 2012 ADA STANDARDS FOR ACCESSIBLE DESIGN REQUIREMENTS

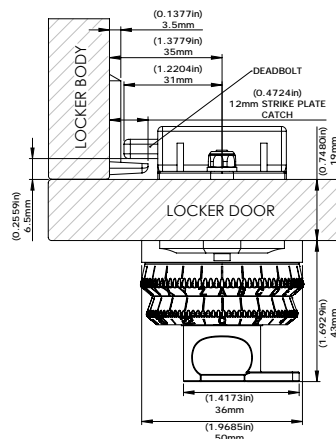
- 5% of lockers and their operable parts, the locks, must meet ADA specifications.
- Locks shall be operable with one hand.
- Shall not require tight grasping, pinching, or twisting of the wrist to operate.
- Shall have a force required to activate of 5lbs (22.2N) maximum.
- Locks shall be installed maximum 48.00"/1220mm from the floor surface.



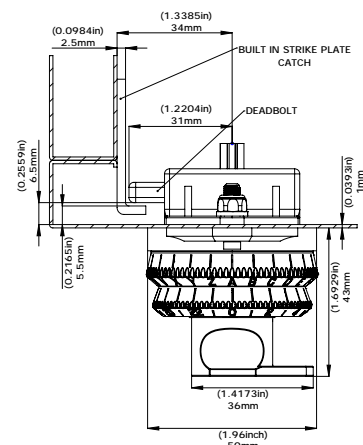
### LOCK ROUTING



### TOP VIEW 6-21mm THICK DOOR



### TOP VIEW 1-6mm THICK DOOR





**GEKIPS**

partenaire

**KEYLESS.CO**

77 rue du 14 Juillet  
94700 MAISONS-ALFORT  
01 41 78 68 40  
[contact@gekips.com](mailto:contact@gekips.com)